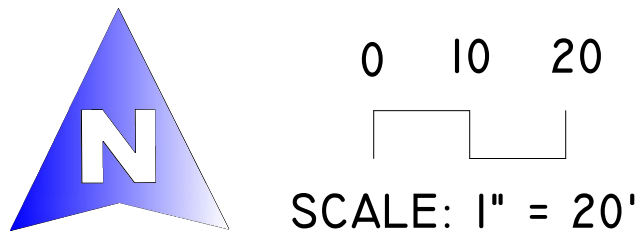
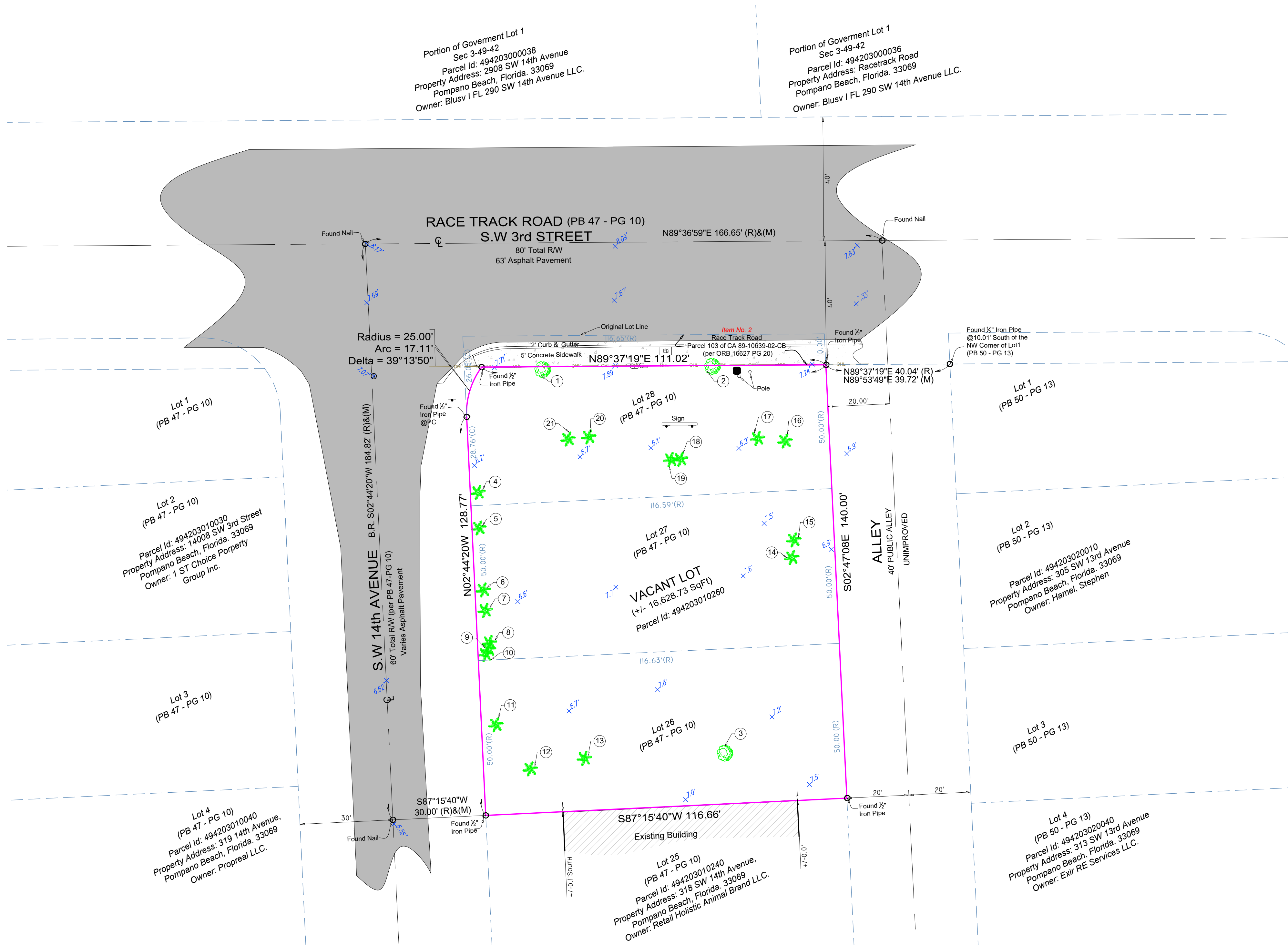


ALTA / NSPS LAND TITLE SURVEY

A PARCEL OF LAND LYING AND BEING A PORTION OF THE WEST 1/2 OF THE NE 1/4 OF THE SECTION 3, TOWNSHIP 49 SOUTH, RANGE 42 EAST, CITY OF BROWARD COUNTY, FLORIDA



10 SURVEY MAP



9 TREE CHART

Note: Tree Location Survey has not been performed based on a Certified Arborist Report. Common names and scientific names were determined to the best of our knowledge.

TREE CHART					
Tree #	Common Name	Scientific Name	Trunk Diameter at Breast Height DBH(in) (+/-)	Approximate Height (ft)(+/-)	Approximate Canopy (ft)(+/-)
1	Unknown	Unknown	10	12	8
2	Unknown	Unknown	10	12	6
3	Unknown	Unknown	24	30	30
4	Sabal Palmetto Tree	Swamp Cabbage tree	16	20	10
5	Sabal Palmetto Tree	Swamp Cabbage tree	16	20	10
6	Sabal Palmetto Tree	Swamp Cabbage tree	12	12	10
7	Sabal Palmetto Tree	Swamp Cabbage tree	12	12	14
8	Sabal Palmetto Tree	Swamp Cabbage tree	12	12	10
9	Sabal Palmetto Tree	Swamp Cabbage tree	12	12	10
10	Sabal Palmetto Tree	Swamp Cabbage tree	10	12	10
11	Sabal Palmetto Tree	Swamp Cabbage tree	14	12	10
12	Sabal Palmetto Tree	Swamp Cabbage tree	14	12	10
13	Sabal Palmetto Tree	Swamp Cabbage tree	12	12	10
14	Sabal Palmetto Tree	Swamp Cabbage tree	14	14	12
15	Sabal Palmetto Tree	Swamp Cabbage tree	12	12	10
16	Sabal Palmetto Tree	Swamp Cabbage tree	12	20	10
17	Sabal Palmetto Tree	Swamp Cabbage tree	16	15	10
18	Sabal Palmetto Tree	Swamp Cabbage tree	16	15	10
19	Sabal Palmetto Tree	Swamp Cabbage tree	16	15	20
20	Sabal Palmetto Tree	Swamp Cabbage tree	16	15	20
21	Sabal Palmetto Tree	Swamp Cabbage tree	16	18	10

LEGEND, SYMBOLS & ABBREVIATIONS

2 PROPERTY ADDRESS

S.W. 14th Avenue, Pompano Beach, Florida 33069

Additions and deletions to this Survey Map are prohibited. This Survey Map and Report are not valid without the signature and seal of the Professional Surveyor and Mapper, without the authorized electronic signature and seal of the Professional Surveyor and Mapper.

QA/QC BY: O.C.B.I

FIELD DATE: 03-18-2024

8 PROJECT NUMBER

UPDATED DATE: N/A

10/22/2025

2 of 2

